


Human OSM protein, His Tag

Cat #: PRP1040

Size: 20µg/100µg/500µg

Product Information

	Product Name: Human OSM proteinn, His Tag		
REF	Catalog Number: PRP1040	LOT	Lot Number: Refer to product label
	Purity: > 98 % as determined by SDS-PAGE		
	Storage: Store at -20°C		Preparation method: E. coli
	Shipping: The product is shipped at ambient temperature.		

Background: Oncostatin M (OSM) is a glycoprotein belonging to the interleukin-6 family of cytokines that includes leukemia-inhibitory factor, granulocyte colony-stimulating factor, and interleukin 6. OSM encodes a growth regulator, which inhibits the proliferation of a number of tumor cell lines. It stimulates proliferation of AIDS-KS cells. OSM regulates cytokine production, including IL-6, G-CSF and GM-CSF from endothelial cells. OSM is considered as a pleiotropic cytokine that initiates its biological activities through specific cell surface receptors. The low affinity LIF receptor that shares the similarity of containing protein gp130 has now been identified to be a component of a high-affinity OSM receptor that will transduce OSM signals. OSM has also been shown to play a role in both pro and anti-inflammatory actions. OSM may also be involved in many biometabolism processes including liver development, haematopoiesis, inflammation, bone formation and destruction and possibly CNS development.

Sequence: Amino acid sequence derived from Human OSM (P13725) (Ala26-Arg221) was expressed with 6xHis tag at the N-terminus.

Protein length: The recombinant Human OSM consists of 202 amino acids and predicts a molecular mass of 24.4 kDa.

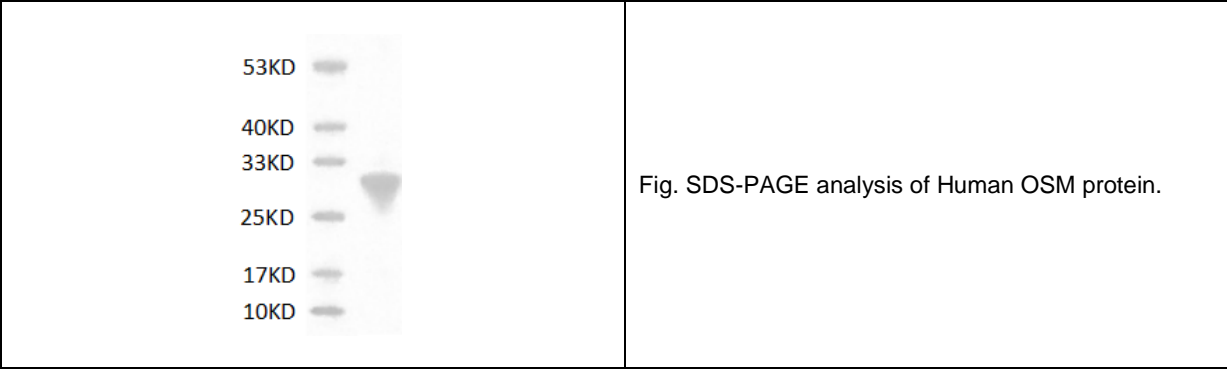
Biological Activity: Testing in progress.

Endotoxin: < 0.1 EU per µg of the protein as determined by the LAL method.

Formulation: Lyophilized from sterile PBS, 350mM NaCl, pH7.4.

Storage Instructions: Lyophilized recombinant Human OSM protein product should be stored desiccated below -20°C. Upon reconstitution, the protein should be stored at 4°C between 2-7 days and for future use below -20°C. For long term storage it is recommended to add a carrier protein (0.1% HSA or BSA). Please prevent freeze-thaw cycles.

Usage notes: Always centrifuge tubes before opening. It is recommended to reconstitute the lyophilized recombinant Human OSM protein using the buffer we provided not less than 100µg/ml, which can then be further diluted to other aqueous solutions.



Note: The product listed herein is for research use only and is not intended for use in human or clinical diagnosis. Suggested applications of our products are not recommendations to use our products in violation of any patent or as a license. We cannot be responsible for patent infringements or other violations that may occur with the use of this product.